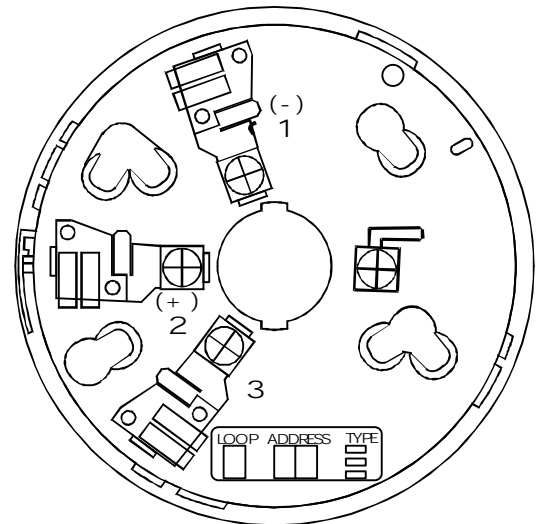


## Detector Base B501 and B501DG

The Detector Bases B501 / B501DG are used with automatic fire detectors type W1251E, W2251E, 5551E and 5551RE. The difference between both detector bases is only their height

### Specifications

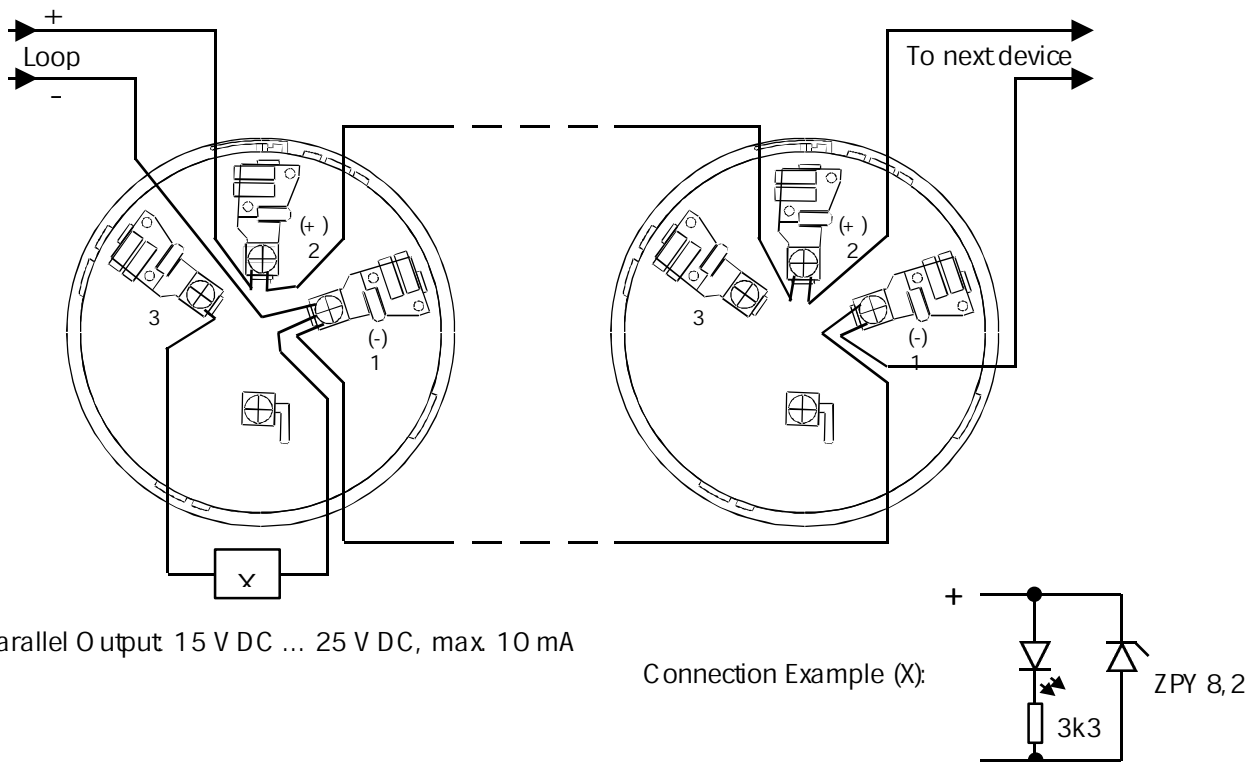
Diameter:		102 mm
Height	- B501:	18 mm
	- B501DG:	26 mm
Pitch Circle for Screws:		Ø 60 mm
Cable Size:		0,5 ... 2,5 mm <sup>2</sup>
Operating Temperature Range:		-10°C ... + 50°C
Material:		Plastic, white
Weight		appr. 150 g
Order No.	- B501:	K0 245 752 6
	- B501DG:	K0 245 753 6



### Installation

Both detector bases are designed for surface mounting. The cable-inlet can be done from the bottom or from the side by breaking prepunched sections.

### Electrical Wiring



05/98 TSN/Mfh

Note: Use shielded cable only.

## Installation Notes

This detector base includes an optional tamper-proof feature (see fig. 1) that when activated prevents removal of the detector without the use of a tool (screwdriver). Use a small bladed screwdriver to remove detector (fig. 2).

**Caution:** Once the tamper-proof feature is activated – it is not resettable.  
- You can't remove detector with detector-removal-tool.

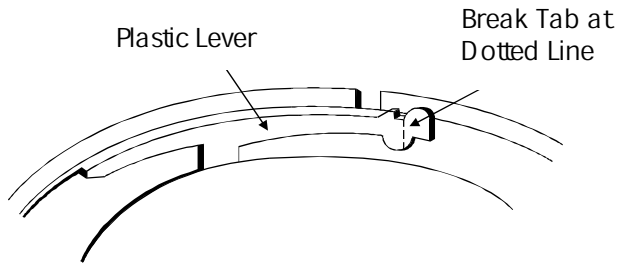


fig. 1

The spade lug terminal is connected to the base terminal as shown (fig. 3).

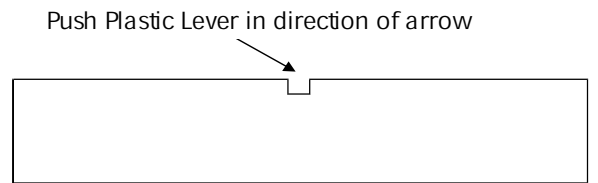


fig. 2

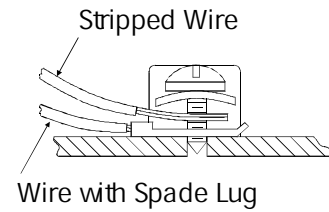
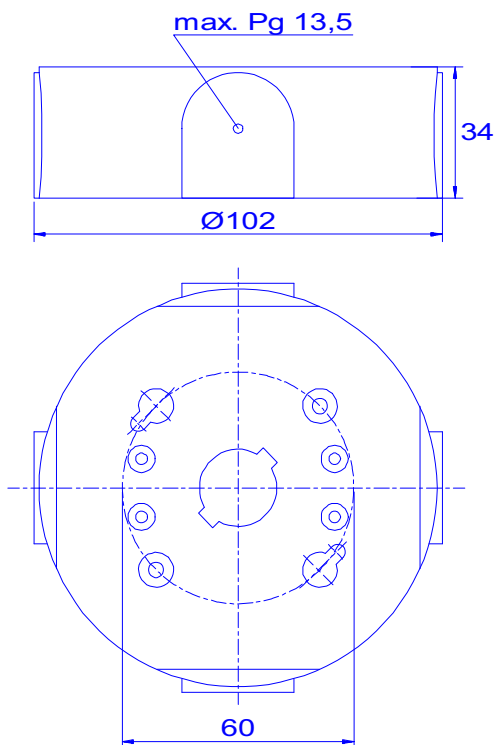
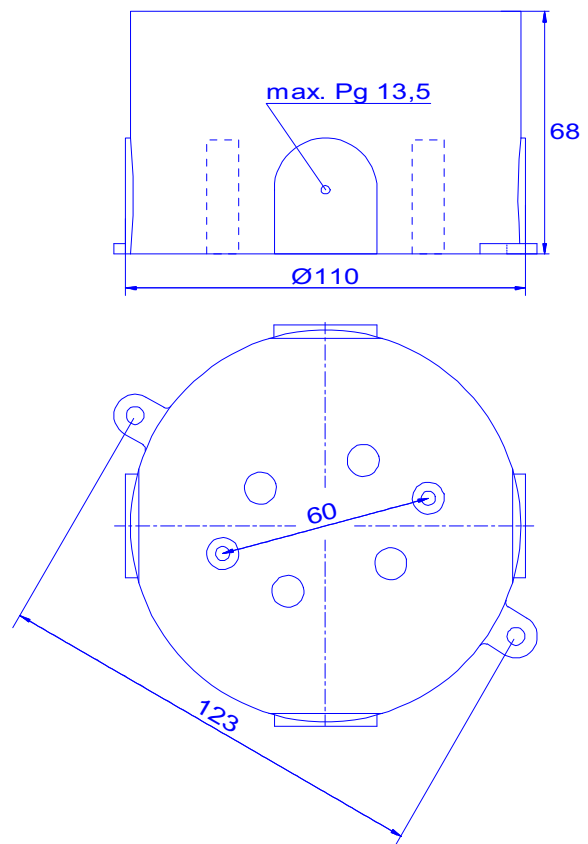


fig. 3

## Accessories



Detector Base-surface mounting adapter SMK 400  
Order-No.: KO 245 751 6



Humid environment-adapter WB 1  
(upon request)